



Legacy Gifts

For all enquiries please contact
Michelle Cooper, Morecambe Bay Partnership:

T. 07760 881826

E. michelle@morecambebay.org.uk

Registered Charity: 1173489



Registered Charity: 1173489

morecambebay.org.uk



morecambebay.org.uk



If Morecambe Bay holds a special place in your heart, you can help look after this amazing place long into the future by leaving a gift in your will.



Income from legacies, of any size, are transformational to a local charity like ours and critical in helping us protect and care for Morecambe Bay for generations to come.

Once you have taken care of family and friends, if you have a little extra, consider remembering Morecambe Bay Partnership in your will. By pledging to leave a gift, you'll know you are making a lasting difference to the people and places of Morecambe Bay, and their future.

By remembering Morecambe Bay Partnership in your will, you will be caring for the local places and communities you cherish around the Bay and support vital work needed to help them thrive.



The difference your gift will make to Morecambe Bay

A gift in your will is one of the most valuable ways you can help local causes and support communities.

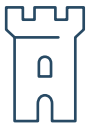
Your gift will help to:



Fund projects that keep the Bay protected, conserved and healthy so it will thrive into the future.



Help the Bay's internationally important bird life survive and stop the decline of our local nature.



Protect the extraordinary heritage of our area and share it with others so the Bay is treasured and valued.



Clean up the Bay – less plastic, less pollution, better beaches, healthier wildlife.

“The first time I saw the sunset here, I just thought Wow!”

(Daryl, 2023)

About our charity

Morecambe Bay is truly special.

It is the largest intertidal area in the UK where four estuaries join in a horseshoe-shaped bay of spectacular scale and grandeur. It's an awe-inspiring elemental place where shining sands and shifting channels alternate with ever-changing seascapes as the tide ebbs and flows. The scale and grandeur of the views, the evocative calls of the wading birds, the big skies and rich heritage all lift the spirits.

Morecambe Bay Partnership is the only charity solely dedicated to keeping Morecambe Bay special. For over 25 years we've been connecting people with the precious nature, culture and heritage of the Bay, conserving and celebrating this unique place and supporting its communities.

“Morecambe Bay Partnership is on a unique mission to protect Morecambe Bay and its communities”

(Supporter Consultation, 2022)



A gift that keeps on giving

If you decide to make a gift to Morecambe Bay Partnership, you can be sure that your generosity, whatever the size of gift, will support and take care of the Bay you love for future generations.

Any gift, no matter how big or small, helps protect precious places for future generations to enjoy - THANK YOU.

A gift in your will is possibly the most significant gift you will ever make, allowing you to influence the world you leave behind for future generations to come.

Legacies free from any restrictions are the most helpful to charities as they can be directed to areas of work that are most in need at that time.

There are different ways to leave a gift in your will:

Percentage of your estate –

This can be a share of whatever is left after friends and family are taken care of, all debts have been settled and other gifts made. Even a very small percentage can make a huge difference to what we can achieve for Morecambe Bay. There are other advantages too as this type of gift can grow with inflation over time making it worth more than a set cash gift.

Cash gift – or sometimes called a pecuniary bequest – this is where you leave a specific sum of money. You can choose any amount you like and review it from time to time.

An item – or sometimes called a specific bequest. This is when you choose to gift a special item – property, belongings or land – to Morecambe Bay Partnership. If this is the case, we recommend that you contact us, so that we can work together to discuss and see if we can accommodate your wishes in the Charity's plans.



Frequently asked questions

I'm not wealthy, can I still make a difference?

Every donation, however small, makes a positive difference and enables us to support the people and places of Morecambe Bay into the future.

How should I start planning my will?

If you don't already have a will, talking to a solicitor would be the first thing to do. This ensures your will is legally correct and that all your wishes are carried out. A solicitor will help you calculate the value of your estate, choose the type of legacy to leave and choose your executors. Family and friends may be able to recommend a good solicitor. Alternately, if you live in the UK you can find a local solicitor via The Law Society. Visit www.lawsociety.org.uk

I've made my will already. Can I change it?

If you would like to include a gift to Morecambe Bay Partnership in your existing will, simply contact your solicitor who will add a Codicil – a short, inexpensive, legal document – to make any additions.

Can I request that my legacy is used for a particular purpose?

Unrestricted gifts enable us to use the money where it is needed most when it becomes available. However, if you are interested in leaving a gift for a particular purpose, please contact us in the first instance and we'd be happy to discuss your wishes.

Where can I find out more information about the tax benefits associated with Legacy giving?

Consult HMRC and a solicitor for further advice and information. The Law Society can provide contact details of solicitors.

What if my circumstances change or I change my mind?

It is a good idea to occasionally review your will to ensure it reflects any changes in your personal circumstances or wishes. You can change your mind at any time.

If I want to leave a gift to Morecambe Bay Partnership, what information is essential?

In order to include a gift to Morecambe Bay Partnership your will must state the charity's:

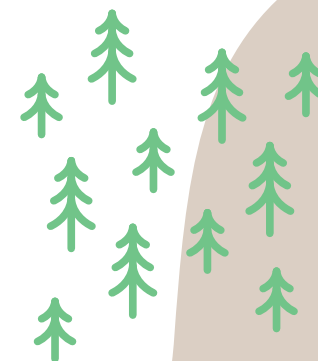
- Full name: Morecambe Bay Partnership
- Full address: Stricklandgate House, 92 Stricklandgate, Kendal, Cumbria LA9 4PU
- Registered charity number: 1173489

Do I need to tell you if I have included a gift to Morecambe Bay Partnership in my will?

Not at all. You do not need to inform us of your intentions. However, if you do wish to let us know, we'd love to hear, and can make sure we let you know about our latest work to help Morecambe Bay and the projects we are planning for the future.

Would you make my gift public?

We will always respect your privacy and you or your estate's wishes. We will never share anything that you would prefer to remain private.



“Morecambe Bay is never the same. The light is different to other places. It changes. Come to the front at Morecambe Bay and look across. It just gives you that sense of calm.”

(David, 2023)

As a charity we need your support to care for Morecambe Bay for future generations.

Any gift we receive, no matter how large or small, makes a great contribution to our ongoing work helping to keep Morecambe Bay special.

“Morecambe Bay is just a beautiful environment and full of nature. I love to watch the wading birds, the jaw dropping murmurations and see the tide gallop in.”

(Jean, 2023)



Gifts from others have helped us to:



Connect 1000s of children and young people to Morecambe Bay through our learning programmes.



Remove 85 tonnes of beach litter making our coast more beautiful and healthier for everyone and lead major community based environmental projects.



Involve 1000s of local people to enjoy and care for the Bay's birds, flora, historic sites, local history and fishing stories.



Bring inspirational arts opportunities to the Bay's communities.



Create new wildlife habitats and supported flora restoration.



Create the much loved Bay Cycle Way, bringing £1million to the local economy.



Create new, accessible routes and mobility services so that everyone can enjoy getting outdoors. This includes free to hire, off road mobility scooters.



Forged vital partnerships with many organisations and community groups to care for Morecambe Bay together, and support its communities.